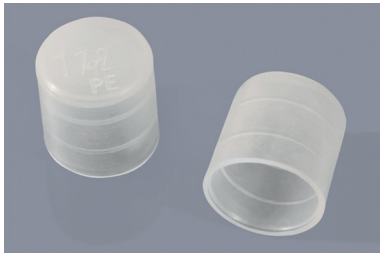
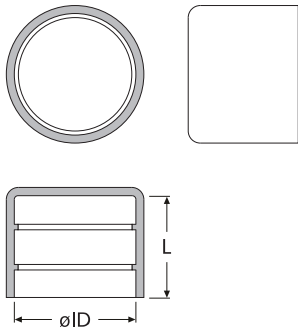


SK ... RI



Rohrverschluss-Kappen mit Hafrillen  
Pipe caps with gripping grooves



Mindestbestellmengen MOQs

ID ø	MOQ
4,0 - 28,0	1.000x
30,0 - 45,4	500x
48,3 - 141,3	siehe Webseite
146,0 - 244,5	siehe Webseite
267,0 - 1620,0	siehe Webseite

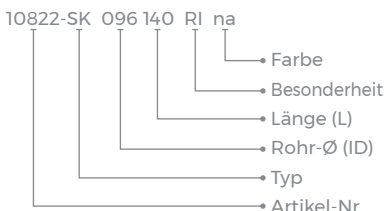
Unit: mm

Art.-Nr.	ID ø	L	Farbe	Art.-Nr.	ID ø	L	Farbe	Art.-Nr.	ID ø	L	Farbe
10815	4,0	22,0	□	10857	50,0	30,0	□	10899	136,0	30,0	□
10816	5,0	18,0	□	10858	50,8	30,0	□	10900	139,7	40,0	■
10817	6,0	18,0	□	10859	52,0	32,0	□	10901	141,3	40,0	□
10818	6,2	22,0	□	10860	52,8	28,0	□	10902	146,0	40,0	□
10819	7,0	18,0	□	10861	54,0	30,0	□	10903	149,0	40,0	□
10820	8,0	17,0	□	10862	55,0	30,0	□	10904	152,4	40,0	□
10821	9,0	18,0	□	10863	57,0	28,0	□	10905	156,0	40,0	□
10822	9,6	14,0	□	10864	59,0	28,0	□	10906	159-160	40,0	□
10823	10,0	18,0	□	10865	60,3	30,0	□	10907	165,1	40,0	□
10824	11,0	19,0	□	10866	63,5	32,0	□	10908	168,3	40,0	■
10825	12,0	18,0	□	10867	64,0	32,0	□	10909	176,0	40,0	□
10826	12,7	14,0	□	10868	65,0	35,0	□	10910	177,8	42,0	□
10827	13,0	18,0	□	10869	67,0	35,0	□	10911	180,0	40,0	□
10828	13,7	18,0	□	10870	70,0	30,0	□	10912	185,0	40,0	□
10829	14,0	18,0	□	10871	73,0	36,0	□	10913	193,7	40,0	□
10830	15,0	18,0	□	10872	75,0	36,0	□	10914	219,1	40,0	■
10831	16,0	18,0	□	10873	76,1	36,0	□	10915	232,0	40,0	□
10832	17,2	18,0	□	10874	77,0	36,0	□	10916	244,5	44,0	□
10833	18,0	18,0	□	10875	78,0	36,0	□	10917	267,0	40,0	□
10834	19,0	18,0	□	10876	78,1	25,0	□	10918	273,0	40,0	■
10835	20,0	18,0	□	10877	80,0	30,0	□	10919	323,9	47,0	■
10836	21,3	18,0	□	10878	81,0	30,0	□	10920	355,6	56,0	■
10837	22,0	18,0	□	10879	82,0	30,0	□	10921	368,0	55,0	■
10838	23,2	17,0	□	10880	83,0	30,0	□	10922	406,4	62,0	■
10839	24,0	18,0	□	10881	85,0	32,0	□	51213	419,1	60,0	■
10840	25,0	17,0	□	10882	88,9	40,0	■	51214	457,2	62,0	■
10841	25,4	17,0	□	10883	90,0	25,0	□	51215	508,0	67,0	■
10842	26,0	17,0	□	10884	92,4	25,0	□	51216	558,0	60,0	■
10843	26,9	27,0	□	10885	95,0	33,0	□	51217	609,6	62,0	■
10844	28,0	20,0	□	10886	101,6	40,0	■	51218	660,4	115,0	■
10845	30,0	27,0	□	10887	103,0	40,0	□	51219	711,2	115,0	■
10846	32,0	23,0	□	10888	105,0	40,0	□	51220	762,0	115,0	■
10847	33,7	24,0	□	10889	106,0	40,0	□	51221	812,8	115,0	■
10848	35,0	28,0	□	10890	108,0	40,0	□	51222	863,6	115,0	■
10849	38,0	27,0	□	10891	110,0	40,0	□	51223	914,4	115,0	■
10850	39,0	17,0	□	10892	114,3	40,0	□	51224	1.016	115,0	■
10851	40,0	20,0	□	10893	117,5	40,0	□	51225	1.066	115,0	■
10852	41,5	25,0	□	10894	121,0	36,0	□	51226	1.117	125,0	■
10853	42,4	26,0	□	10895	125,0	37,0	□	51227	1.219	115,0	■
33122	44,5	27,0	■	10896	127,0	40,0	□	51228	1.422	150,0	■
10855	45,4	20,0	□	10897	130,0	40,0	□	51229	1.524	150,0	■
10856	48,3	30,0	□	10898	133,0	40,0	□	51230	1.625	150,0	■

weitere Abmessungen u. Farben a. A. · Unit: mm · MOQ: siehe nebenstehende Tabelle

Artikel-Bez. für Rohrverschluss-Kappen mit Hafrillen (SK ... RI):

10822 - ID=9,6 mm - L=14,0 mm



Standard-Material: LD-PE □ natur / ■ schwarz -30°C bis +75°C

Info: Auf Anfrage weitere Farben erhältlich.