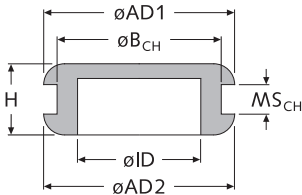


DT MF


 Membrantüllen, geschlossen, plan
 Flat closed membrane grommets


Art.-Nr.			Artikel-Bez.	ID ø	B _{CH} ø	MS _{CH} ca.	AD1 ø	AD2 ø	H	Typ	Farbe
PVC	TPE	EPDM									
-	01253	-	DT MF 04064/09508...	4,0	6,4	0,8	9,5	9,5	3,6		■
34462	-	-	DT MF 0507/1130...	5,0	7,0	3,0	11,0	11,0	7,0		■
06646	06682	-	DT MF 05509/1230...	5,5	9,0	3,0	12,0	12,0	7,0		■
-	-	12495	DT MF 05910/1330...	5,9	10,0	3,0	13,0	13,0	7,2		■
06647	06683	-	DT MF 0609/1230...	6,0	9,0	3,0	12,0	12,0	7,0		■
21850	-	-	DT MF 0612/1715...	6,0	12,0	1,5	17,0	17,0	7,0		■
06648	06684	-	DT MF 0614/1810...	6,0	14,0	1,0	18,0	18,0	6,0		■
01254	39072	-	DT MF 064099/12715...	6,4	9,9	1,5	12,7	12,7	6,7		■
06649	06685	-	DT MF 0714/1830...	7,0	14,0	3,0	18,0	18,0	8,0		■
-	-	12496	DT MF 07810/1515...	7,8	10,0	1,5	15,0	15,0	8,5		■
01255	39073	-	DT MF 0811/17515...	8,0	11,0	1,5	17,5	17,5	8,1		■
06650	06686	-	DT MF 0814/1830...	8,0	14,0	3,0	18,0	18,0	8,0		■
06651	06687	-	DT MF 0912/1620...	9,0	12,0	2,0	16,0	16,0	7,0		■
06652	06688	-	DT MF 0914/1830...	9,0	14,0	3,0	18,0	18,0	8,0		■
01256	39074	-	DT MF 095125/15515...	9,5	12,5	1,5	15,5	15,5	6,5		■
-	-	12497	DT MF 09714/17512...	9,7	14,0	1,2	17,5	17,5	7,0		■
06653	06689	-	DT MF 1018/2230...	10,0	18,0	3,0	22,0	22,0	8,0		■
06654	06690	-	DT MF 1018/2240...	10,0	18,0	4,0	22,0	22,0	9,0		■
06655	06691	-	DT MF 1118/2230...	11,0	18,0	3,0	22,0	22,0	8,0		■
06656	06692	-	DT MF 1118/2240...	11,0	18,0	4,0	22,0	22,0	9,0		■
-	-	12498	DT MF 1216/2128...	12,0	16,0	2,8	21,0	21,0	6,6		■
06657	06693	-	DT MF 1218/2230...	12,0	18,0	3,0	22,0	22,0	8,0		■
06658	06694	-	DT MF 1218/2240...	12,0	18,0	4,0	22,0	22,0	9,0		■
-	-	12499	DT MF 137182/23720...	13,7	18,2	2,0	23,7	23,7	6,6		■
06887	-	-	DT MF 1619/25515...	16,0	19,0	1,5	25,5	25,5	7,1		■
01258	-	-	DT MF 1620/25515...	16,0	20,0	1,5	25,5	25,5	7,1		■
-	39077	-	DT MF 1922/25515...	19,0	22,0	1,5	25,5	25,5	8,1		■
35372	-	-	DT MF 2030/3330...	20,0	30,0	3,0	33,0	33,0	11,0		■
01260	-	-	DT MF 205255/3015...	20,5	25,5	1,5	30,0	30,0	8,1		■
-	07032	-	DT MF 3142/4924...	31,0	42,0	2,4	47,0	49,0	10,0		■
-	-	19767*	DT MF 6472/9050...*	64,0	72,0	5,0	90,0	90,0	17,0		■

*Bauform: gewölbt, EPDM -30°C bis +90°C · Farbe „weiß“ auf Anfrage · Unit: mm · MOQ 100/1.000x

Standard-Material: **P:** PVC ■ schwarz -30°C bis +70°C
T: TPE ■ schwarz -40°C bis +90°C (UL-94 HB auf Anfrage)
E: EPDM ■ schwarz -40°C bis +120°C

Hinweis:

- siehe auch Verschluss-Stopfen VS ... S-K TPE im Kapitel „Stopfen und Kappen“
- Membrantüllen mit Stanzung siehe nachfolgende Seiten
- Alle Membrantüllen können auch mit einer Stanzung geliefert werden.

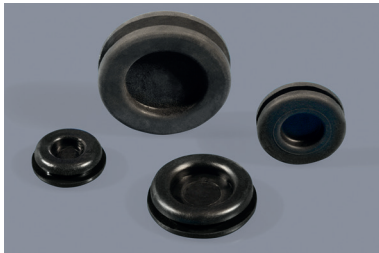


Artikel-Bez. für Membrantülle PVC:

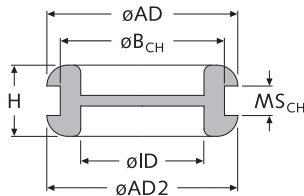
Artikel-Nr.: 06649

 DT MF 0714/1830 P
 ↳ Material
 ↳ Typ + Maße

DT M



Membrantüllen, geschlossen
Closed membrane grommets



Standard-Material:

- P:** PVC schwarz
-30°C bis +70°C
- T:** TPE schwarz
-40°C bis +90°C (UL-94 HB auf Anfrage)
- N:** Neopren/Chloropren schwarz
-30°C bis +90°C
- E:** EPDM schwarz
-40°C bis +120°C

Art.-Nr.	Artikel-Bez.			ID	B _{CH}	MS _{CH}	AD1	AD2	H	Typ	Farbe	
	PVC	TPE	Neopren									EPDM
21852	-	-	-	DT M 06085/1425P	6,0	8,5	2,5	14,0	14,0	7,0	☞	■
-	-	-	08443	DT M 088137/18820E	8,8	13,7	2,0	18,8	16,6	7,0	☞	■
-	-	-	08444	DT M 0913/20827E	9,0	13,0	2,7	20,8	20,8	9,0	☞	■
06659	06668	-	-	DT M 0915/2020...	9,0	15,0	2,0	20,0	18,0	7,0	☞	■
-	-	06836	-	DT M 09155/2010N	9,0	15,5	1,0	20,0	20,0	7,0	☞	■
-	-	06837	-	DT M 09155/2020N	9,0	15,5	2,0	20,0	20,0	7,0	☞	■
-	-	-	08442	DT M 09513/1715E	9,5	13,0	1,5	17,3	17,3	8,0	☞	■
07022	-	-	-	DT M 1116/1915P	11,0	16,0	1,5	19,0	19,0	6,0	☞	■
06660	06670	-	-	DT M 1118/22520...	11,0	18,0	2,0	22,5	21,5	7,0	☞	■
-	-	-	08445	DT M 11185/2317E	11,0	18,5	1,7	23,0	23,0	7,0	☞	■
-	-	06838	-	DT M 11185/2320N	11,0	18,5	2,0	23,0	23,0	7,0	☞	■
21854	-	-	-	DT M 1215/1915P	12,0	15,0	1,5	19,0	19,0	8,0	☞	■
07023	-	-	-	DT M 12516/2224P	12,5	16,0	2,4	21,5	21,5	8,0	☞	■
06662	06672	-	-	DT M 13520/2420...	13,5	20,0	2,0	24,0	24,0	7,0	☞	■
-	-	06839	-	DT M 135205/2520N	13,5	20,5	2,0	25,0	25,0	7,0	☞	■
14832	-	-	-	DT M 1418/2320P	14,0	18,0	2,0	23,0	23,0	8,0	☞	■
07024	-	-	-	DT M 1419/25515P	14,0	19,0	1,5	25,5	25,5	8,0	☞	■
07025	-	-	-	DT M 1419/25524P	14,0	19,0	2,4	25,5	25,5	9,0	☞	■
07026	-	-	-	DT M 1419/25530P	14,0	19,0	3,0	25,5	25,5	9,5	☞	■
07027	-	-	-	DT M 1420/25515P	14,0	20,0	1,5	25,5	25,5	8,0	☞	■
07028	-	-	-	DT M 1619/25520P	16,0	19,0	2,0	25,5	25,5	8,0	☞	■
03244	06674	-	-	DT M 1622/27520...	16,0	22,0	2,0	27,5	26,0	7,4	☞	■
-	-	49067	06840	DT M 16225/2820E	16,0	22,5	2,0	28,0	28,0	7,0	☞	■
-	-	06847	-	DT M 16225/27540N	16,0	22,5	4,0	27,5	27,5	9,0	☞	■
-	-	-	42771 ¹	DT M 17215/30550E ¹	17,0	21,5	5,0	30,5	25,0	12,5	☞	■
-	-	-	12006	DT M 18525/30520E	18,5	25,0	2,0	30,5	30,5	7,0	☞	■
-	07029	-	-	DT M 19255/3652T	19,0	25,5	2,4	36,5	36,5	8,5	☞	■
34290	41570	-	-	DT M 2125/34520...	21,0	25,0	2,0	34,5	34,5	8,0	☞	■
03243	06676	-	-	DT M 2128/34520...	21,0	28,0	2,0	34,5	34,5	8,0	☞	■
-	-	-	06841	DT M 2128/3520E	21,0	28,0	2,0	35,0	35,0	8,0	☞	■
-	-	06848	-	DT M 2128/3540N	21,0	28,0	4,0	35,0	35,0	10,0	☞	■
-	-	12007	-	DT M 2532/3920N	25,0	32,0	2,0	39,0	39,0	8,0	☞	■
07030	-	-	-	DT M 25532/3824P	25,5	32,0	2,4	38,0	38,0	8,0	☞	■
07031	-	-	-	DT M 25532/3840P	25,5	32,0	4,0	38,0	38,0	9,5	☞	■
34291	41572	-	-	DT M 2932/4320...	29,0	32,0	2,0	43,0	43,0	9,0	☞	■
06665	-	-	-	DT M 29365/4322P	29,0	36,5	2,2	43,0	43,0	9,5	☞	■
-	06679	-	-	DT M 2937/43522T	29,0	37,0	2,2	43,5	43,5	9,5	☞	■
-	-	-	06842	DT M 2937/4420E	29,0	37,0	2,0	44,0	44,0	9,0	☞	■
-	-	12008	-	DT M 3140/4725N	31,0	40,0	2,5	47,0	47,0	10,0	☞	■
06666	-	-	-	DT M 3546/52525P	35,0	46,0	2,5	52,5	52,5	10,0	☞	■
-	06680	-	-	DT M 35547 /5325T	35,5	47,0	2,5	53,0	53,0	10,0	☞	■
-	-	-	06843 ⁵	DT M 3647/5425E	36,0	47,0	2,5	54,0	54,0	10,0	☞	■
-	-	12009	-	DT M 3950/5725N	39,0	50,0	2,5	57,0	57,0	10,0	☞	■
-	-	-	15316 ¹	DT M 4247/6115KE ¹	42,0	47,0	1,5	61,0	61,0	15,0	☞	■
06667	-	-	-	DT M 46559/66225P	46,5	59,0	2,5	66,2	66,2	10,5	☞	■
-	06681	-	-	DT M 4760/6727T	47,0	60,0	2,7	67,0	67,0	10,3	☞	■
-	-	-	06844	DT M 4860/6825E	48,0	60,0	2,5	68,0	68,0	10,0	☞	■
-	-	06845	-	DT M 5364/7525N	53,0	64,0	2,5	75,0	75,0	10,0	☞	■
-	-	12011	-	DT M 6575/8725N	65,0	75,0	2,5	87,0	87,0	10,0	☞	■
-	-	-	06846	DT M 6979/9025E	69,0	79,0	2,5	90,0	90,0	10,0	☞	■

¹konische Bauform · ⁵Silikon rot verfügbar · weitere Abmessungen a. A. · Unit: mm · MOQ 100/1.000x

Artikel-Bez. für Membrantülle TPE:
Artikel-Nr.: 06668

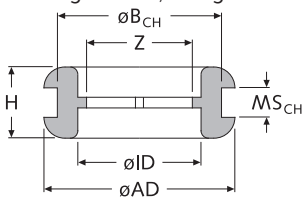
DT M 0915/2020 T
 ↳ Material
 ↳ Typ + Maße

DT M

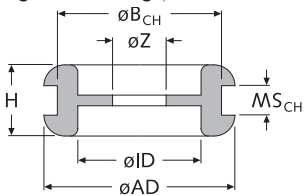


Membrantüllen, kreuzgeschlitzt oder gelocht Perforated membrane grommets with cross-cut or hole

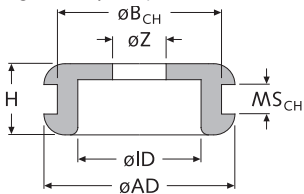
Typ A - kreuzgeschlitzt, mittig cross-cut



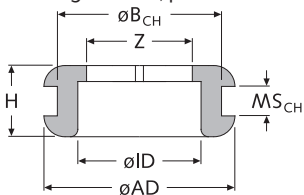
Typ B - gelocht, mittig perforated hole



Typ C - gelocht, plan perforated hole



Typ D - kreuzgeschlitzt, plan cross-cut



Standard-Material:

P: PVC -30°C bis +70°C ■ sw

T: TPE -40°C bis +90°C ■ sw

N: Neopren -30°C bis +90°C ■ sw

E: EPDM -40°C bis +120°C ■ sw

Hinweis:

Alle Membrantüllen können auf Anfrage mit einer kundenspezifischen Stanzung geliefert werden.

Art.-Nr.	Artikel-Bez.				ID ø	B _{CH} ø	MS _{CH} ca.	AD ø	H	Z	Typ	Farbe	
	PVC	TPE	Neopren	EPDM									
NEW -	-	-	-	56758	DT MF 05509/1230ES	5,5	9,0	3,0	12,0	7,0	5,0	D	■
13391	-	-	-	-	DT MF 0714/1830PG3,5	7,0	14,0	3,0	18,0	8,0	3,5	C	■
33665	-	-	-	-	DT MF 0812/1620PG6,5	8,0	12,0	2,0	16,0	7,0	6,5	C	■
-	32989	-	-	-	DT MF 0912/1620TG6	9,0	12,0	2,0	16,0	7,0	6,0	C	■
13392	-	-	-	-	DT MF 0914/1830PG3,1	9,0	14,0	3,0	18,0	8,0	3,1	C	■
13393	-	-	-	-	DT MF 0914/1830PG5,5	9,0	14,0	3,0	18,0	8,0	5,5	C	■
-	06669	-	-	-	DT M 0915/2020TS	9,0	15,0	2,0	20,0	7,0	8,0	A	■
-	-	06856	-	-	DT M 09155/2020NG4,5	9,0	15,5	2,0	20,0	7,0	4,5	B	■
13394	-	-	-	-	DT MF 1018/2230PG6	10,0	18,0	3,0	22,0	8,0	6,0	C	■
13395	-	-	-	-	DT MF 1018/2230PG7	10,0	18,0	3,0	22,0	8,0	7,0	C	■
13396	-	-	-	-	DT MF 1018/2230PG8	10,0	18,0	3,0	22,0	8,0	8,0	C	■
13397	-	-	-	-	DT MF 1018/2230PG9	10,0	18,0	3,0	22,0	8,0	9,0	C	■
-	06671	-	-	-	DT M 1118/22520...G4,5	11,0	18,0	2,0	22,5	7,0	4,5	B	■
-	-	06857	-	-	DT M 11185/2320NG4,5	11,0	18,5	2,0	23,0	7,0	4,5	B	■
-	41569	-	-	-	DT M 13520/2420TS	13,5	20,0	2,0	24,0	7,0	10,0	A	■
-	-	06858	-	-	DT M 135205/2520NG4,5	13,5	20,5	2,0	25,0	7,0	4,5	B	■
-	-	06859	-	-	DT M 135205/2520NG8	13,5	20,5	2,0	25,0	7,0	8,0	B	■
-	-	06849	-	-	DT M 135205/2520NS	13,5	20,5	2,0	25,0	7,0	10,0	A	■
-	06675	-	-	-	DT M 1622/27520TG10	16,0	22,0	2,0	27,5	7,4	10,0	B	■
-	-	-	06860	-	DT M 16225/2820EG5	16,0	22,5	2,0	28,0	7,0	5,0	B	■
-	-	-	06861	-	DT M 16225/2820EG10	16,0	22,5	2,0	28,0	7,0	10,0	B	■
-	-	-	06850	-	DT M 16225/2820ES	16,0	22,5	2,0	28,0	7,0	14,0	A	■
-	-	-	06862	-	DT M 16225/2820EG15	16,0	22,5	2,0	28,0	7,0	15,0	B	■
-	-	06863	-	-	DT M 16225/2830NG15D	16,0	22,5	3,0	28,0	8,0	15,0	B	■
-	06677	-	-	-	DT M 2128/34520TG18	21,0	28,0	2,0	34,5	8,0	18,0	B	■
-	06678	-	-	-	DT M 2128/34520TG20	21,0	28,0	2,0	34,5	8,0	20,0	B	■
-	41714	-	-	-	DT M 2128/34520TS	21,0	28,0	2,0	34,5	8,0	17,0	A	■
-	-	06864	-	-	DT M 2128/3520NG3	21,0	28,0	2,0	35,0	8,0	3,0	B	■
-	-	-	06865	-	DT M 2128/3520EG5	21,0	28,0	2,0	35,0	8,0	5,0	B	■
-	-	06866	-	-	DT M 2128/3520NG6	21,0	28,0	2,0	35,0	8,0	6,0	B	■
-	-	06867	-	-	DT M 2128/3520NG10	21,0	28,0	2,0	35,0	8,0	10,0	B	■
-	-	06851	-	-	DT M 2128/3520NS	21,0	28,0	2,0	35,0	8,0	17,0	A	■
-	-	06868	-	-	DT M 2128/3520NG18	21,0	28,0	2,0	35,0	8,0	18,0	B	■
-	-	06869	-	-	DT M 2128/3520NG20	21,0	28,0	2,0	35,0	8,0	20,0	B	■
-	-	-	20112	-	DT M 2937/4420EG5	29,0	37,0	2,0	44,0	9,0	5,0	B	■
-	-	-	06870	-	DT M 2937/4420EG10	29,0	37,0	2,0	44,0	9,0	10,0	B	■
-	-	-	06871	-	DT M 2937/4420EG14	29,0	37,0	2,0	44,0	9,0	14,0	B	■
-	-	-	06872	-	DT M 2937/4420EG18	29,0	37,0	2,0	44,0	9,0	18,0	B	■
-	-	-	24337	-	DT M 2937/4420EG25	29,0	37,0	2,0	44,0	9,0	25,0	B	■
-	-	-	06852	-	DT M 2937/4420ES	29,0	37,0	2,0	44,0	9,0	25,0	A	■
-	-	-	06873	-	DT M 3647/5425EG14	36,0	47,0	2,5	54,0	10,0	14,0	B	■
-	-	-	06874	-	DT M 3647/5425EG32	36,0	47,0	2,5	54,0	10,0	32,0	B	■
-	-	-	06853	-	DT M 3647/5425ES	36,0	47,0	2,5	54,0	10,0	32,0	A	■
-	-	-	40678	-	DT M 4860/6825EG14	48,0	60,0	2,5	68,0	10,0	14,0	B	■
-	-	-	06875	-	DT M 4860/6825EG16	48,0	60,0	2,5	68,0	10,0	16,0	B	■
-	-	-	06854	-	DT M 4860/6825ES	48,0	60,0	2,5	68,0	10,0	42,0	A	■
-	-	06855	-	-	DT M 5364/7525NS	53,0	64,0	2,5	75,0	10,0	25,0	A	■
-	-	-	06876	-	DT M 6979/9025EG16	69,0	79,0	2,5	90,0	10,0	16,0	B	■
-	-	-	06877	-	DT M 6979/9025EG36	69,0	79,0	2,5	90,0	10,0	36,0	B	■
-	-	-	06878	-	DT M 6979/9025EG55	69,0	79,0	2,5	90,0	10,0	55,0	B	■
-	-	-	31173	-	DT M 6979/9025EG63	69,0	79,0	2,5	90,0	10,0	63,0	B	■

weitere Abmessungen a. A. · Unit: mm · MOQ 100/1.000x



Artikel-Bez. für Membrantülle TPE:

Artikel-Nr.: 06852

DT M 2937/4420 ES



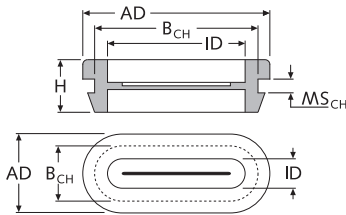
DT ML + DT MFL



Langloch-Membrantüllen

Oval membrane grommets

Typ DT ML

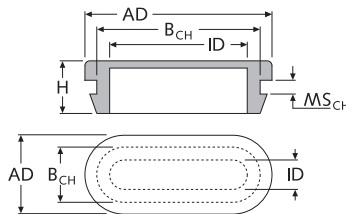


Art.-Nr.	Artikel-Bez.	ID	B _{CH}	MS _{CH} ca.	AD	H	Typ	geschlitzt s/fit		
18628	52802	DT ML 0821-1225/1629-25	8x21	12x25	1,0-2,5	16x29	6,0		-	
18629	52809	DT ML 1033-1437/1942-25	10x33	14x37	1,0-2,5	19x42	7,0		-	
18630	52889	DT ML 1246-1650/2357-25	12x46	16x50	1,0-2,5	23x57	9,0		-	
NEW	-	57488*	DT ML 1246-1650/2357-25S	12x46	16x50	1,0-2,5	23x57	9,0		x
18625	52891	DT MFL 083266-1230/1735-28	8,3x26,6	12x30	2,8	17x35	6,3		-	
NEW	55829*	-	DT MFL 083266-1230/1735-28S	8,3x26,6	12x30	2,8	17x35	6,3		x

*vorgeschlitzt (pre-slotted) · Unit: mm · MOQ 100/1.000x

Standard-Material: EPDM ■ schwarz -40°C bis +120°C
Silikon □ natur -50°C bis +200°C UL-94 HB

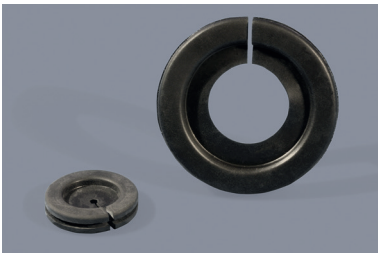
Typ DT MFL



Eigenschaften:

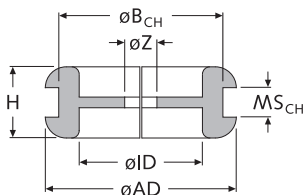
Die Langloch-Membrantülle kann entweder als Blindstopfen oder als Durchführungstülle verwendet werden. Zur Durchführung von Kabeln oder ähnlichem besitzt die Membrantülle eine Schlitzprägung, die bei Bedarf geöffnet werden kann. Die asymmetrische Bauform erleichtert das Einsetzen in die Bohrung.

DT M



Membrantüllen, seitlich geschlitzt (offen)

Split ring membrane grommets



Art.-Nr.	Artikel-Bez.	ID	B _{CH}	MS _{CH} ca.	AD	H	Z	Typ	Farbe	
NEW	52986	DT M 13520/2420E G4F	13,5	20,0	2,0	24,0	7,0	4,0		■
06879	DT M 2128/3520E G3F	21,0	28,0	2,0	35,0	8,0	3,0		■	
06880	DT M 4860/6825E G30F	48,0	60,0	2,5	68,0	10,0	30,0		■	

weitere Abmessungen a. A. · Unit: mm · MOQ 50/100x

Standard-Material: EPDM ■ schwarz -40°C bis +120°C

Eigenschaften:

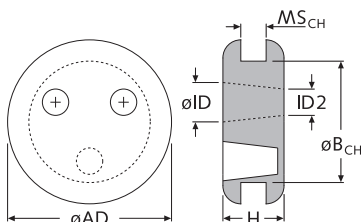
Die Öffnung erleichtert und ermöglicht ein nachträgliches Einsetzen in die Bohrung.

DT MF



Membrantüllen, mit Blindlöchern

Membrane grommets with blind holes

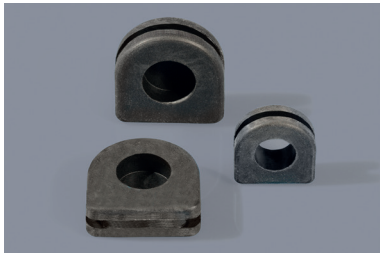


Art.-Nr.	Artikel-Bez.	ID	B _{CH}	MS _{CH} ca.	AD	H	ID2	Blind- löcher	Farbe
02541	DT MF 0210/1320 P 2/3offen	3,0	10,0	2,0	13,0	6,0	2,0	1	■
16486*	DT MF 01510/1320 T 2/3offen	3,0	10,0	2,0	13,0	6,0	1,5	1	■
02542	DT MF 0210/1320 P 1/3offen	3,0	10,0	2,0	13,0	6,0	2,0	2	■
02543	DT MF 0210/1320 P 0/3offen	3,0	10,0	2,0	13,0	6,0	2,0	3	■
18753	DT MF 0210/1320 T 0/3offen	3,0	10,0	2,0	13,0	6,0	2,0	3	■

*inkl. Dichtlippe · weitere Abmessungen a. A. · Unit: mm · MOQ 100x

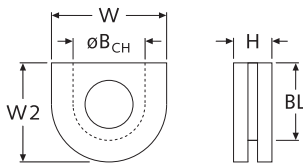
Standard-Material: P: PVC ■ schwarz -30°C bis +70°C
T: TPE ■ schwarz -40°C bis +90°C UL-94 HB

DT M + DT NK + DT PK



Durchführungstüllen, mit Rand geschlossen, geschlitzt oder offen

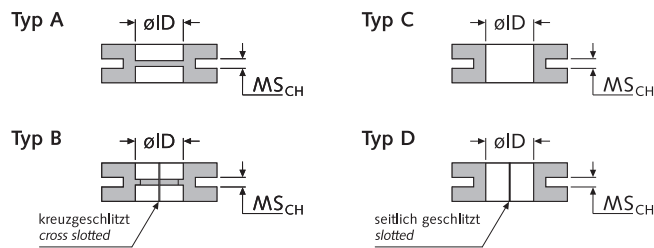
Grommets with flat edge closed, cut or open



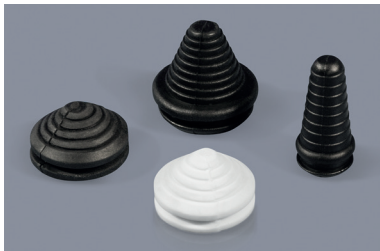
Art.-Nr.	Artikel-Bez.	ID	B _{CH}	MS _{CH} ca.	W	W2	H	BL	Typ	Material	Farbe
20441	DT PK 05075/1210-P	5,0	7,5	1,0	12,0	9,5	4,0	7,5	C	PVC	■
NEW 53730	DT NK 05710/1213-P	5,7	10,0	1,3	12,0	10,5	6,5	9,5	D	EPDM	■
NEW 55310	DT NK 06125/2028-P	6x10	12,5	2,8	20,0	22,5	8,0	18,8	D	Silikon	■
18626	DT NK 07105/1414-P	7,0	10,5	1,5	13,8	13,8	5,5	12,0	C	EPDM	■
18627	DT M 09138/1920N-P	9,0	13,8	2,0	19,0	19,0	7,0	16,3	A	EPDM	■
24379	DT M 13522/2420T-P	13,5	22,0	2,0	24,0	24,0	9,0	22,0	A	TPE	■
24377	DT M 13520/2420P-P	13,5	20,0	2,0	24,0	24,0	9,0	22,0	A	PVC	■
24378	DT M 13520/2420P-PS	13,5	20,0	2,0	24,0	24,0	9,0	22,0	B	PVC	■
06673	DT M 13520/2440T-P	13,5	20,0	4,0	24,0	24,0	9,0	22,0	A	TPE	■
06663	DT M 13520/2440P-P	13,5	20,0	4,0	24,0	24,0	9,0	22,0	A	PVC	■
06664	DT M 13520/2440P-PS	13,5	20,0	4,0	24,0	24,0	9,0	22,0	B	PVC	■

weitere Abmessungen a. A. · Unit: mm · MOQ 100x

Standard-Material: Weich-PVC ■ schwarz -30°C bis +70°C
 TPE ■ schwarz -40°C bis +90°C (UL-94 HB auf Anfrage)
 EPDM ■ schwarz -40°C bis +120°C
 Silikon ■ schwarz -50°C bis +200°C UL-94 HB



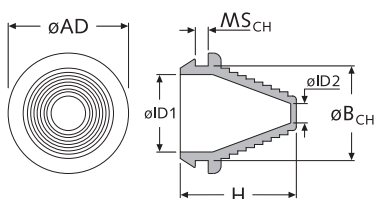
DT MM



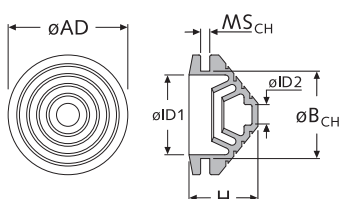
Membrantüllen, mit variablem Innendurchmesser

Membrane grommets with variable inner diameter

Typ A



Typ B



Art.-Nr.	Artikel-Bez.	ID ø	B _{CH} ø	MS _{CH} ca.	AD ø	H	ID2 ø	Typ	Farbe
09019	DT MM 1921/2620PSW	19,0	21,0	2,0	26,0	15,0	5,0	B	■
09020	DT MM 1921/2620PW	19,0	21,0	2,0	26,0	15,0	5,0	B	□
09021	DT MM 2832/3750PSW	28,0	32,0	5,0	37,0	15,0	5,0	B	■
09022	DT MM 2832/3750PW	28,0	32,0	5,0	37,0	15,0	5,0	B	□

weitere Abmessungen a. A. · Unit: mm · MOQ 100x

Standard-Material: Typ A: Weich-PVC ■ schwarz -30°C bis +70°C -
 Typ B: Weich-PVC ■ schwarz -30°C bis +60°C Shore 70A-80A
 Weich-PVC □ weiß -30°C bis +60°C Shore 70A-80A