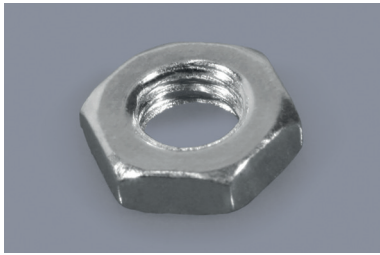
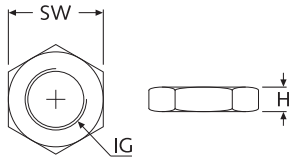


DIN 439 / DIN EN ISO 4035



**Metall-Sechskantmuttern, niedrige Form**  
Low-profile metal hexagon nuts



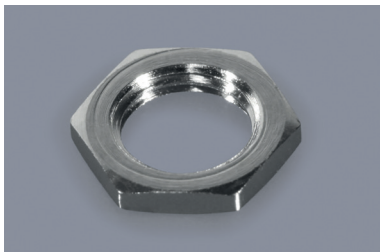
DIN 439 / DIN EN ISO 4035 - Sechskant-Metall-Mutter, flache Bauform:

| St vzkl          | Art.-Nr. |       | IG   | SW  | H   |
|------------------|----------|-------|------|-----|-----|
|                  | A2       | A4    |      |     |     |
| <b>NEW</b> 55386 | 55387    | 55388 | M1,6 | 3,2 | 1,0 |
| 40508            | 40571    | 40578 | M2   | 4   | 1,2 |
| 40509            | 40572    | 40579 | M2,5 | 5   | 1,6 |
| 32011            | 40573    | 40580 | M3   | 5,5 | 1,8 |
| 32012            | 40574    | 40581 | M4   | 7   | 2,2 |
| 32013            | 40575    | 40582 | M5   | 8   | 2,7 |
| 32014            | 40576    | 40583 | M6   | 10  | 3,2 |
| 32015            | 40577    | 40584 | M8   | 13  | 4,0 |
| 32016            | 36452    | 40585 | M10  | 17  | 5,0 |

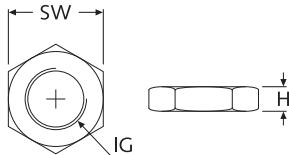
Bestellbsp: DIN 439 St M2,5 · weitere Abmessungen a. A. · Unit: mm · MOQ 100/1.000x

**Standard-Material:** Stahl verzinkt (St vzkl), Edelstahl A2 und A4  
Material auf Anfrage: Messing vernickelt (MsNi) und Messing blank

DIN 439 / DIN EN ISO 4035



**Metall-Sechskantmuttern, niedrige Form, mit Feingewinde**  
Low-profile metal hexagon nuts with fine-pitch thread



Info: u. a. für Potentiometer und Schalter

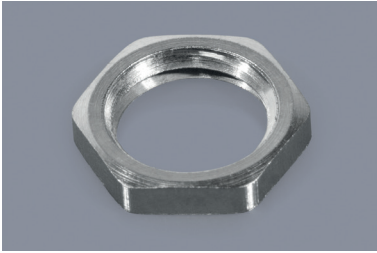
DIN 439 / DIN EN ISO 4035 - Sechskant-Metall-Mutter mit Feingewinde:

| MsNi  | Art.-Nr. |       | IG       | SW | H    |
|-------|----------|-------|----------|----|------|
|       | A2       | A4    |          |    |      |
| 37831 | -        | -     | M5x0,5   | 7  | 1,2  |
| 36914 | -        | -     | M6x0,5   | 8  | 1,3  |
| 38643 | -        | -     | M6x0,75  | 9  | 1,8  |
| 38647 | -        | -     | M7x0,75  | 10 | 2,0  |
| 38648 | -        | -     | M8x0,5   | 10 | 2,5  |
| 38644 | -        | -     | M8x0,75  | 12 | 2,0  |
| 09719 | -        | -     | M10x0,75 | 14 | 2,5  |
| 38645 | -        | -     | M10x1,0  | 14 | 2,5  |
| -     | 56406    | 57199 | M10x1,0  | 17 | 5,0  |
| -     | 57193    | 57200 | M10x1,25 | 17 | 5,0  |
| 38646 | -        | -     | M12x0,75 | 16 | 2,2  |
| -     | 46339    | 57201 | M12x1,0  | 19 | 6,0  |
| -     | 57194    | 57202 | M12x1,25 | 19 | 6,0  |
| -     | 57195    | 57203 | M12x1,5  | 19 | 6,0  |
| -     | 56307    | 57204 | M14x1,5  | 22 | 7,0  |
| -     | 56309    | 57205 | M16x1,5  | 24 | 8,0  |
| -     | 57196    | 57206 | M18x1,5  | 27 | 9,0  |
| -     | 57197    | 57207 | M20x1,5  | 30 | 10,0 |
| -     | 57198    | 57208 | M20x2,0  | 30 | 10,0 |
| 38649 | -        | -     | 3/8"-32G | 14 | 2,5  |

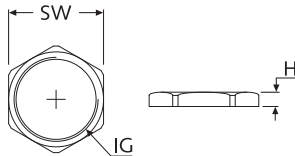
Bestellbsp: DIN 439 A2 M12x1,0 · weitere Abmessungen a. A. · Unit: mm · MOQ 100/1.000x

**Standard-Material:** Messing vernickelt (MsNi), Edelstahl A2 und A4  
Material auf Anfrage: Stahl verzinkt und Messing blank

**DIN 46320**



**Metall-Sechskantmuttern**  
Metal hexagon nuts



**Info:** für Kabelverschraubungen

**DIN 46320 - Sechskant-Metall-Mutter:**

| MsNi                               | Art.-Nr. |        | IG      | SW        | H       | MOQ  |         |
|------------------------------------|----------|--------|---------|-----------|---------|------|---------|
|                                    | NEW A2   | NEW A4 |         |           |         | MsNi | A2 / A4 |
| <b>mit metrischen Gewinde (M):</b> |          |        |         |           |         |      |         |
| NEW 35959                          | -        | -      | M10x1,0 | 14        | 2,8     | 100  | -       |
| 28821                              | -        | -      | M10x1,5 | 14        | 3,0     | 100  | -       |
| NEW 27080                          | -        | -      | M12x1,0 | 14        | 2,5     | 100  | -       |
| 28822                              | 34137    | 38871  | M12x1,5 | 15        | 2,8-3,0 | 100  | 50      |
| 28823                              | 38865    | 38872  | M16x1,5 | 19        | 2,8-3,0 | 100  | 50      |
| 28824                              | 38866    | 38873  | M20x1,5 | 24        | 3,0-3,5 | 100  | 50      |
| 28825                              | 38867    | 38874  | M25x1,5 | 29 / 30 * | 3,5     | 100  | 25      |
| 28826                              | 38868    | 38875  | M32x1,5 | 36        | 4,0     | 100  | 25      |
| 28827                              | 38869    | 38876  | M40x1,5 | 46        | 4,5     | 50   | 10      |
| 28828                              | 38870    | 38877  | M50x1,5 | 55        | 5,0     | 50   | 10      |
| 28829                              | 49899    | 49898  | M63x1,5 | 70        | 6,0     | 50   | 5       |

**mit Panzergewinde (PG):**

|       |   |   |        |    |     |     |   |
|-------|---|---|--------|----|-----|-----|---|
| 08654 | - | - | PG7    | 15 | 2,8 | 100 | - |
| 08655 | - | - | PG9    | 18 | 2,8 | 100 | - |
| 08656 | - | - | PG11   | 21 | 3,0 | 100 | - |
| 08657 | - | - | PG13,5 | 23 | 3,0 | 100 | - |
| 08658 | - | - | PG16   | 26 | 3,0 | 100 | - |
| 08659 | - | - | PG21   | 32 | 3,5 | 100 | - |
| 08660 | - | - | PG29   | 41 | 4,0 | 100 | - |
| 08661 | - | - | PG36   | 51 | 5,0 | 50  | - |
| 08662 | - | - | PG42   | 60 | 5,0 | 50  | - |
| 08663 | - | - | PG48   | 64 | 5,5 | 50  | - |

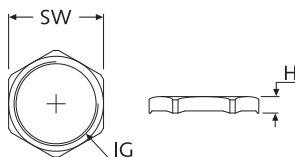
Bestellbsp: DIN 46320 A2 M32x1,5 · weitere Abmessungen a. A. · Unit: mm  
\*MsNi: SW29 / A2 und A4: SW30

**Standard-Material:** Messing vernickelt (MsNi), A2 und A4

**DIN 46320 SK**



**Metall-Sechskantmuttern EMV mit Krallen**  
Metal hexagon claw nuts for EMC



**DIN 46320 SK - Sechskant-Metall-Mutter mit Krallen für EMV-Anwendungen:**

| Art.-Nr. | Artikel-Bez.              | IG      | SW | H   | MOQ |
|----------|---------------------------|---------|----|-----|-----|
| 42803    | DIN 46320 SK MsNi M12x1,5 | M12x1,5 | 15 | 3,5 | 100 |
| 42804    | DIN 46320 SK MsNi M16x1,5 | M16x1,5 | 19 | 3,5 | 100 |
| 42805    | DIN 46320 SK MsNi M20x1,5 | M20x1,5 | 24 | 3,5 | 100 |
| 42806    | DIN 46320 SK MsNi M25x1,5 | M25x1,5 | 30 | 4,0 | 100 |
| 42807    | DIN 46320 SK MsNi M32x1,5 | M32x1,5 | 36 | 4,0 | 100 |
| 42808    | DIN 46320 SK MsNi M40x1,5 | M40x1,5 | 46 | 4,7 | 50  |
| 42809    | DIN 46320 SK MsNi M50x1,5 | M50x1,5 | 60 | 5,7 | 50  |
| 42810    | DIN 46320 SK MsNi M63x1,5 | M63x1,5 | 70 | 6,7 | 25  |

weitere Abmessungen a. A. · Unit: mm

**Standard-Material:** Messing vernickelt (MsNi)  
Auf Anfrage: weitere Materialien