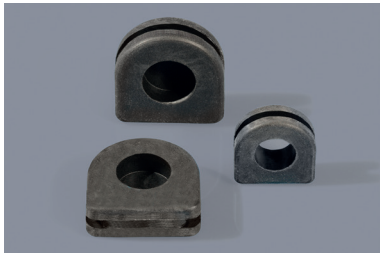
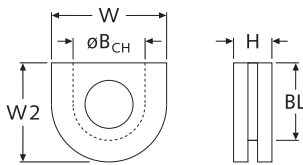


DT M + DT NK + DT PK



Durchführungstüllen, mit Rand geschlossen, geschlitzt oder offen

Grommets with flat edge closed, cut or open

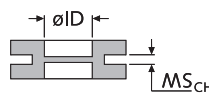


Art.-Nr.	Artikel-Bez.	ID	B _{CH}	MS _{CH} ca.	W	W2	H	BL	Typ	Material	Farbe
20441	DT PK 05075/1210-P	5,0	7,5	1,0	12,0	9,5	4,0	7,5	C	PVC	■
NEW 53730	DT NK 05710/1213-P	5,7	10,0	1,3	12,0	10,5	6,5	9,5	D	EPDM	■
NEW 55310	DT NK 06125/2028-P	6x10	12,5	2,8	20,0	22,5	8,0	18,8	D	Silikon	■
18626	DT NK 07105/1414-P	7,0	10,5	1,5	13,8	13,8	5,5	12,0	C	EPDM	■
18627	DT M 09138/1920N-P	9,0	13,8	2,0	19,0	19,0	7,0	16,3	A	EPDM	■
24379	DT M 13522/2420T-P	13,5	22,0	2,0	24,0	24,0	9,0	22,0	A	TPE	■
24377	DT M 13520/2420P-P	13,5	20,0	2,0	24,0	24,0	9,0	22,0	A	PVC	■
24378	DT M 13520/2420P-PS	13,5	20,0	2,0	24,0	24,0	9,0	22,0	B	PVC	■
06673	DT M 13520/2440T-P	13,5	20,0	4,0	24,0	24,0	9,0	22,0	A	TPE	■
06663	DT M 13520/2440P-P	13,5	20,0	4,0	24,0	24,0	9,0	22,0	A	PVC	■
06664	DT M 13520/2440P-PS	13,5	20,0	4,0	24,0	24,0	9,0	22,0	B	PVC	■

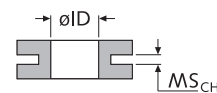
weitere Abmessungen a. A. · Unit: mm · MOQ 100x

Standard-Material: Weich-PVC ■ schwarz -30°C bis +70°C
 TPE ■ schwarz -40°C bis +90°C (UL-94 HB auf Anfrage)
 EPDM ■ schwarz -40°C bis +120°C
 Silikon ■ schwarz -50°C bis +200°C UL-94 HB

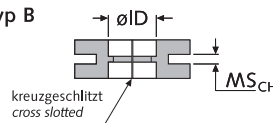
Typ A



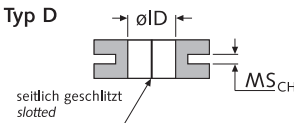
Typ C



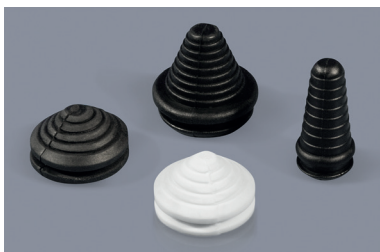
Typ B



Typ D



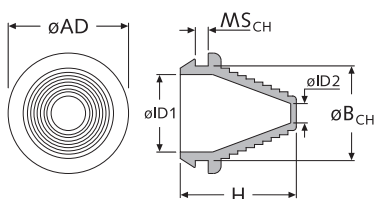
DT MM



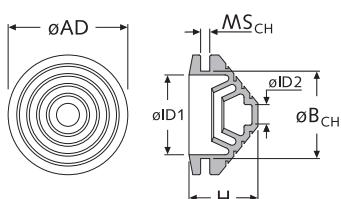
Membrantüllen, mit variablem Innendurchmesser

Membrane grommets with variable inner diameter

Typ A



Typ B



Art.-Nr.	Artikel-Bez.	ID ø	B _{CH} ø	MS _{CH} ca.	AD ø	H	ID2 ø	Typ	Farbe
09019	DT MM 1921/2620PSW	19,0	21,0	2,0	26,0	15,0	5,0	B	■
09020	DT MM 1921/2620PW	19,0	21,0	2,0	26,0	15,0	5,0	B	□
09021	DT MM 2832/3750PSW	28,0	32,0	5,0	37,0	15,0	5,0	B	■
09022	DT MM 2832/3750PW	28,0	32,0	5,0	37,0	15,0	5,0	B	□

weitere Abmessungen a. A. · Unit: mm · MOQ 100x

Standard-Material: Typ A: Weich-PVC ■ schwarz -30°C bis +70°C -
 Typ B: Weich-PVC ■ schwarz -30°C bis +60°C Shore 70A-80A
 Weich-PVC □ weiß -30°C bis +60°C Shore 70A-80A